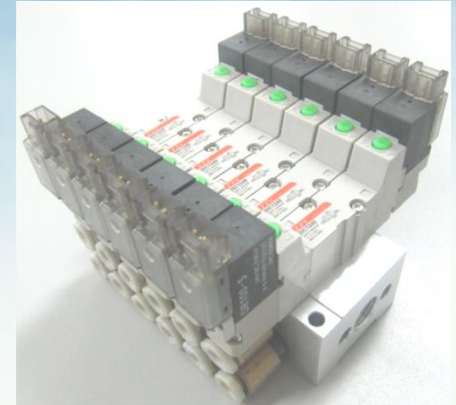
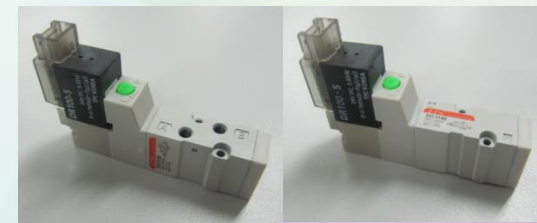


DVC1000 Series Promotional Material



DV1000 Compact Type Valve



1. Specification

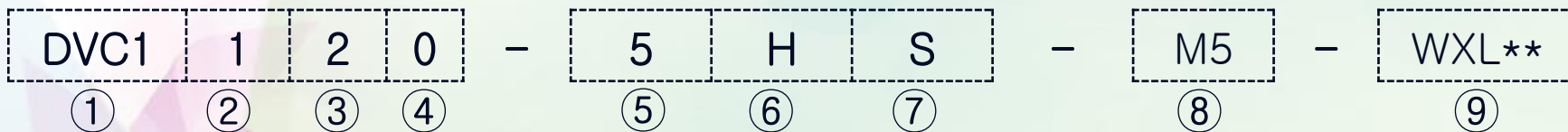
Division		Specification	
Fluid		Air	
Working Pressure (MPa)	SINGLE	0.15~0.7	
	DOUBLE	0.1~0.7	
	3 POSITION	0.2~0.7	
Ambient and Fluid Temperature °C		0~50 °C	
Port size (Body Ported Type)		M3 X 0.5	
Manual type		PUSH & LOCK (Standard)	
PILOT Exhaust Type		Individual Exhaust, Common Exhaust	
Lubrication		Non-lube	
Response (ms)	SINGLE	Less than 15	
	DOUBLE	Less than 15	
	3 POSITION	Less than 30	
(Cv)	Division	Body Ported Type	BASE Mounted Type
	SINGLE, DOUBLE	Over 0.06	Over 0.12
	CLOSED CENTER	Over 0.06	Over 0.12
	EXHAUST CENTER	Over 0.06	Over 0.1
	PRESSURE CENTER	Over 0.06	Over 0.16

Note) The effective sectional area is based on switching P to A or B ports.

DV1000 Compact Type Valve

2.How to order

■ VALVE



① DV1000 COMPACT TYPE VALVE

② Configuration

1	SINGLE
2	DOUBLE
3	CLOSED CENTER
4	EXHAUST CENTER
5	PRESSUER CENTER

③ Body Type

2	Body ported type
4	Base mounted type

④ Exhaust Type

0	Individual Exhaust
3	Common Exhaust for Main and Pilot Valve

⑤ Voltage

1	AC 110V
2	AC 220V
5	DC 24V
6	DC 12V

⑥ Electrical Entry

H	Horizontal Connector
V	Vertical Connector

Note) AC voltage is only available for horizontal connectors

⑦ PCB specifications

Blank	Standard (LAMP TYPE)
D	Non-Polar LAMP TYPE
S	Power Saving PCB TYPE

Note) For D,S type : DC VOLTAGE only

⑧ OPTION

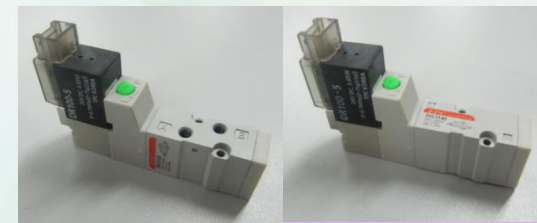
*SUB PLATE & Bracket attached

Blank	Without Sub Plate	
M5	M5 X 0.8 (SUB PLATE)	Base Mounted
B	BRACKET	Body Ported

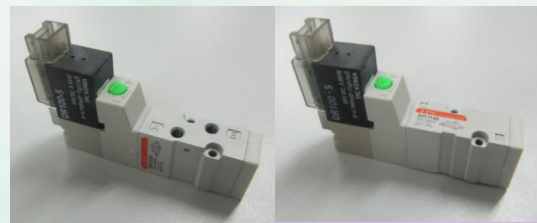
Note)BRACKET is released in a state of non-assembly.

⑨ Length of Lead Wire

Blank	300 mm
XWL 01	100 mm
02	200 mm
⋮	⋮
20	2,000 mm



DV1000 Compact Type Valve



2.How to order

MANIFOLD

DVCM1 - 20 - 02

① ② ③

① DVC1000 MANIFOLD

② Manifold Specification

20	Body Ported
40	BASE Mounted

③ Stations (01~20)



Body Ported Type



BASE Mounted Type

Note1) The minimum stations of body ported are 2 stations.

Note2) The station 01 of base mounted is Sub Plate.

BRACKET ASS'Y(Body Ported Type) : DVC1000-B2

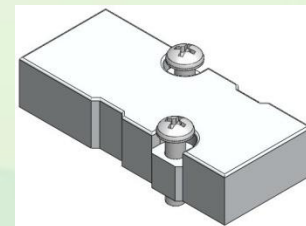


BRACKET ATTACHED



BRACKET

(Including 2PCS of BOLT)

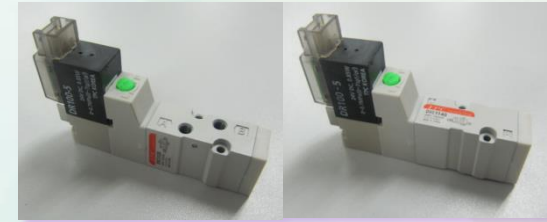


BLANK PLATE

(Including 1PC of GASKET 1EA & 2PCS of BOLT)

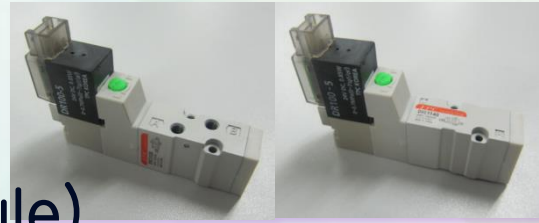
BLANK PLATE ASS'Y(Body Ported & BASE Mounted Common) : DVCM1-B

3. Sales Point

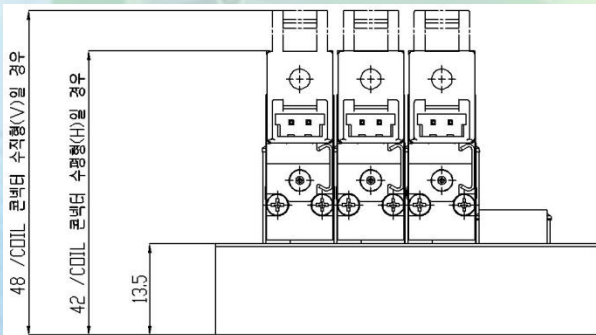
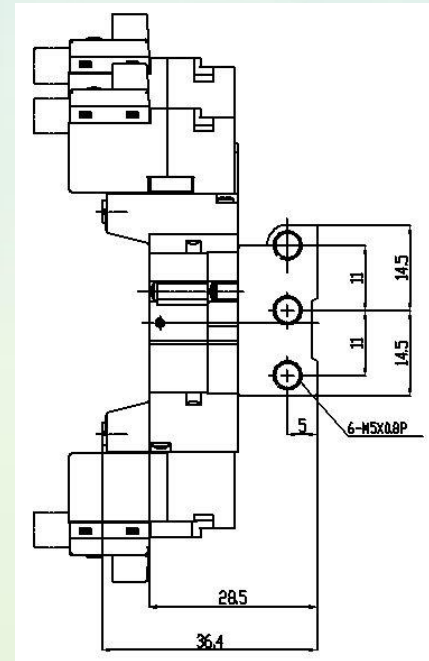
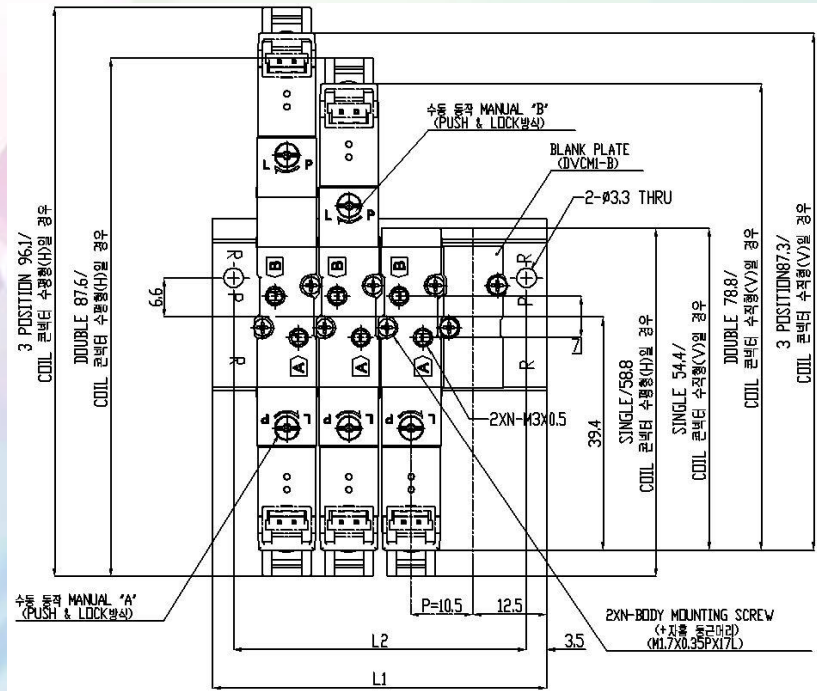


- Obtains the performance equivalent to the individual/common exhaust specification
- Obtains large oil capacity compared to other companies' model of its kind
- Adopts the shape to prevent nudging when operating direct-piping gasket at high pressure for a long time
- Enhances user convenience with the base-piping gasket built in the valve body

DV1000 Compact Type Valve



4-1 Dimensions (Body Ported Module)



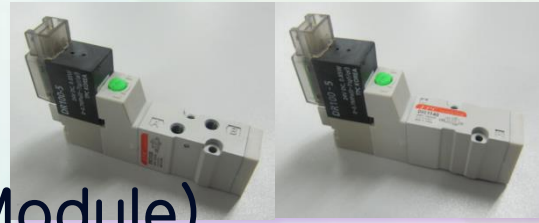
AC VOLTAGE는 수평형(H) 콘넥터만 가능

[단위 : mm]

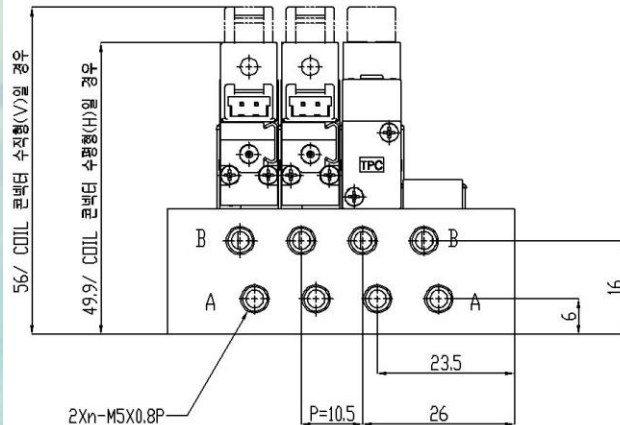
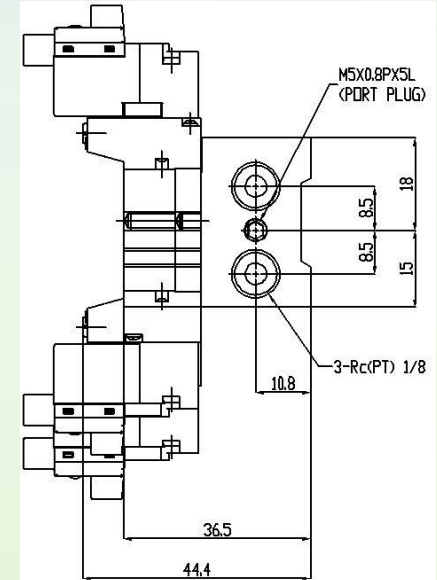
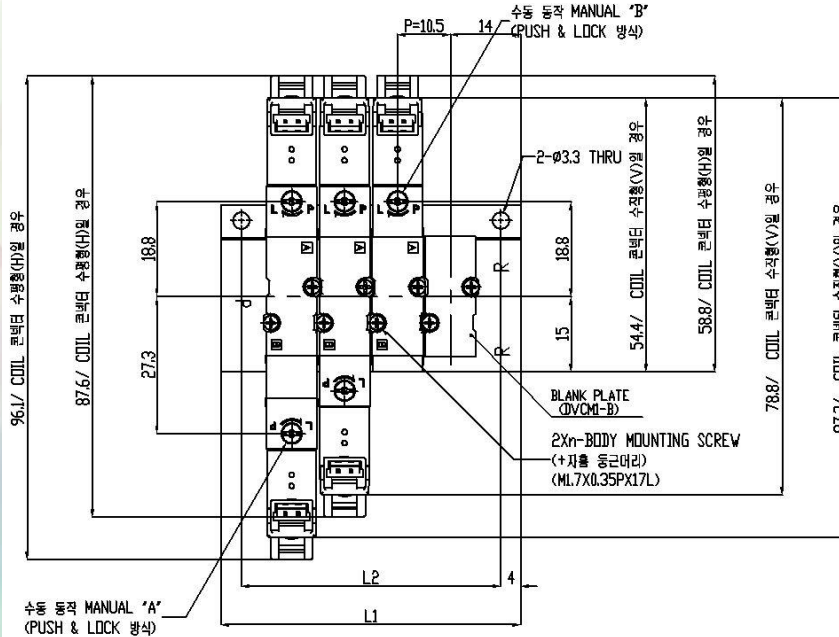
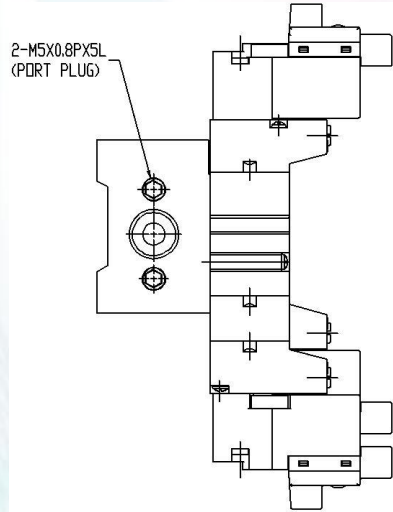
연수	2	3	4	5	6	7	8	9	10	11
L1	35.5	46	56.5	67	77.5	88	96.5	109	119.5	130
L2	28.5	39	49.5	60	70.5	81	91.5	102	112.5	123
연수	12	13	14	15	16	17	18	19	20	
L1	140.5	151	161.5	172	182.5	193	203.5	214	224.5	
L2	133.5	144	154.5	165	175.5	186	196.5	207	217.5	



DV1000 Compact Type Valve



4-1. Dimensions (BASE Mounted Module)

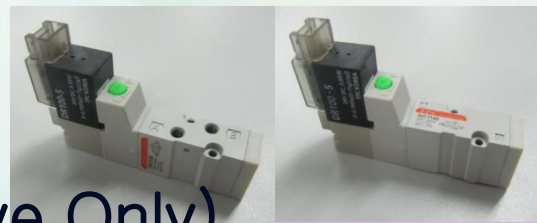


AC VOLTAGE는 수평형(H) 콘넥터만 가능

[단위 : mm]

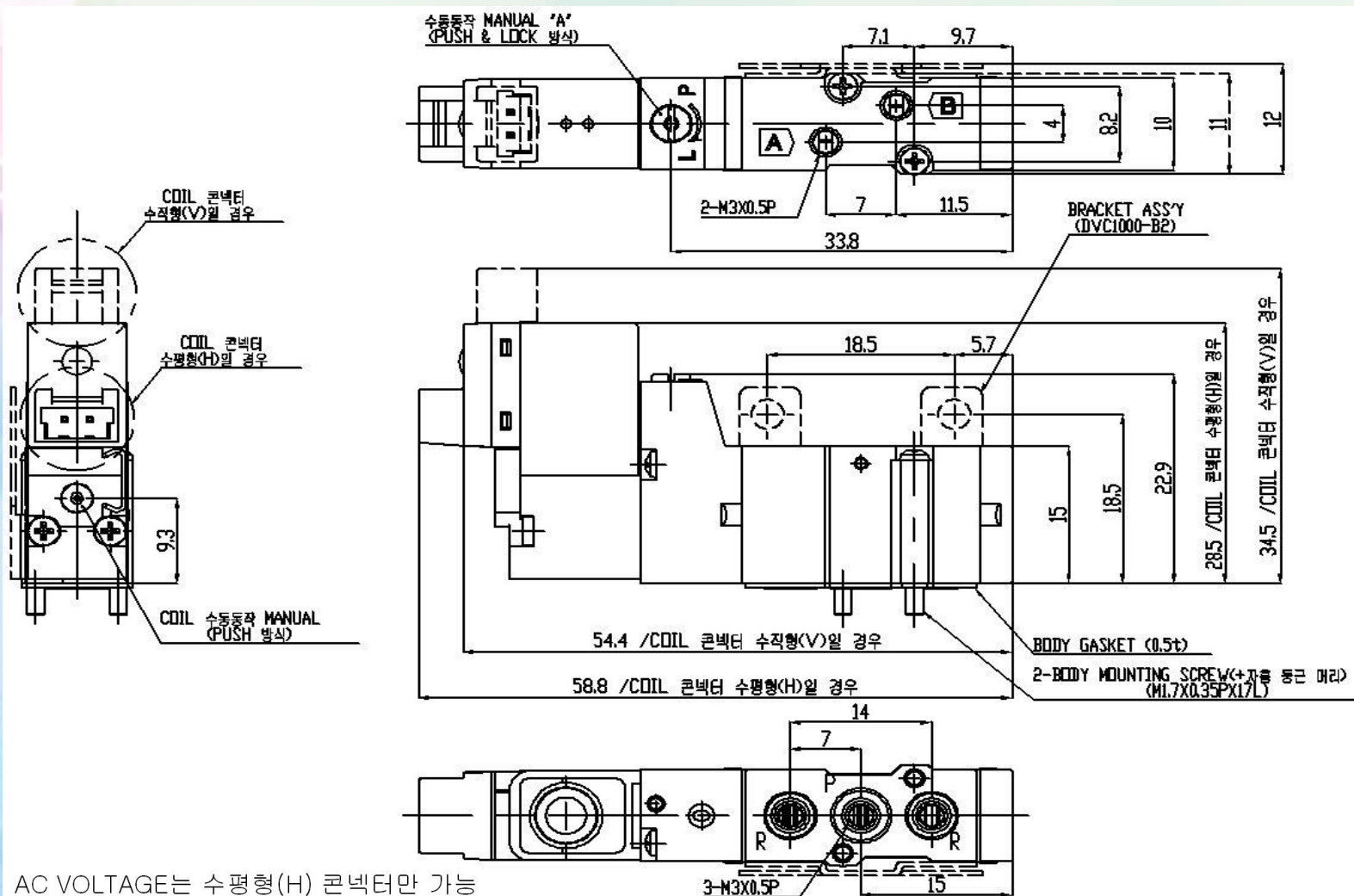
연수 n	1연	2	3	4	5	6	7	8	9	10
L1	28	38.5	49	59.5	70	80.5	91	101.5	112	122.5
L2	20	30.5	41	51.5	62	72.5	83	93.5	104	114.5
연수 n	11	12	13	14	15	16	17	18	19	20
L1	133	143.5	154	164.5	175	185.5	196	206.5	217	227.5
L2	125	135.5	146	156.5	167	177.5	188	198.5	209	219.5

DV1000 Compact Type Valve



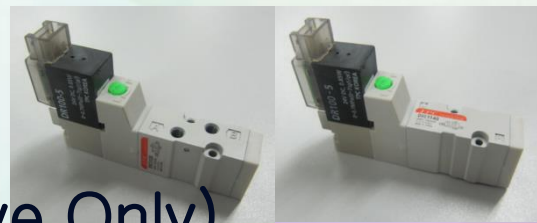
4-2. Dimensions (Body Ported Valve Only)

■ DVC1120(3)/ SINGLE



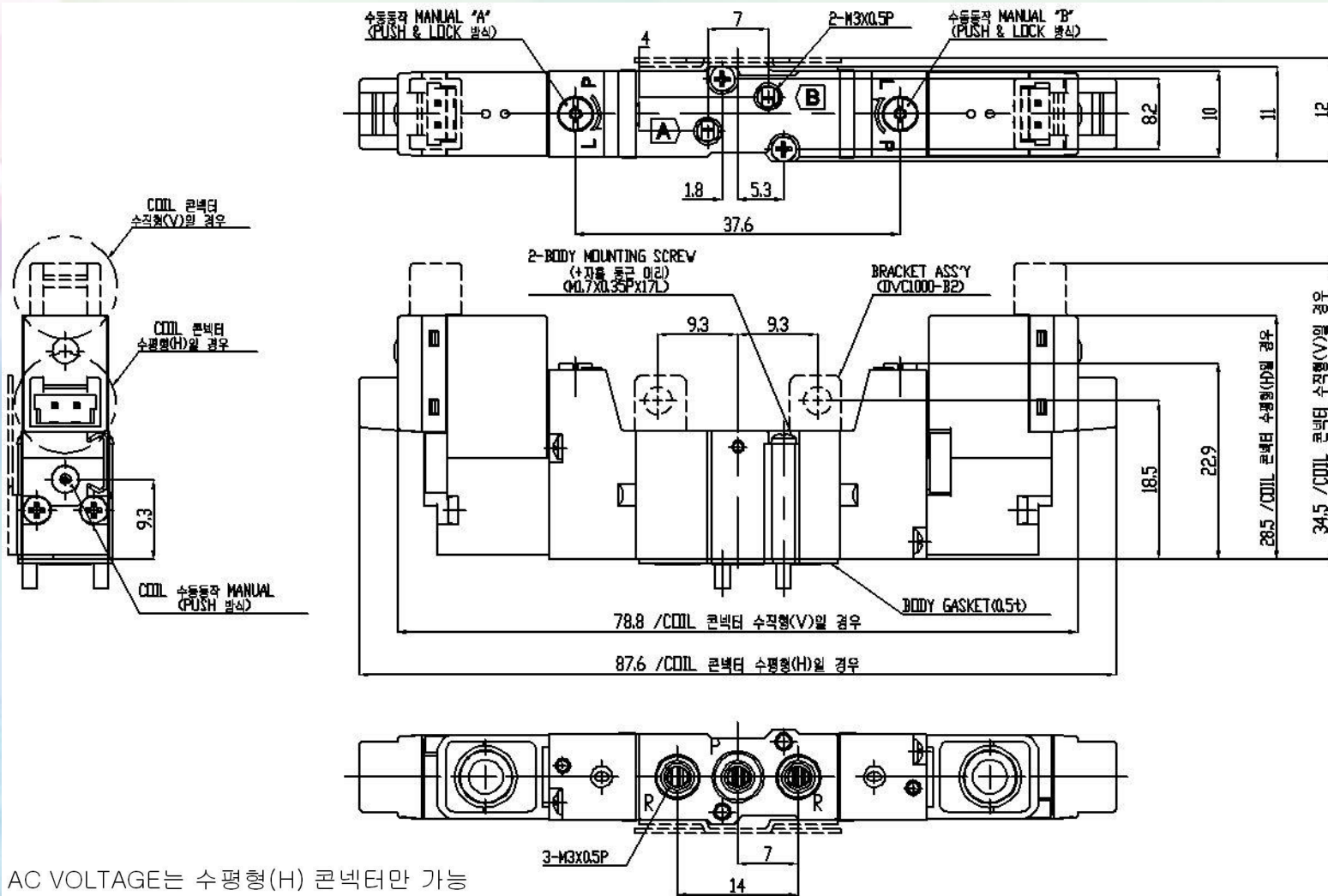
AC VOLTAGE는 수평형(H) 콘넥터만 가능

DV1000 Compact Type Valve



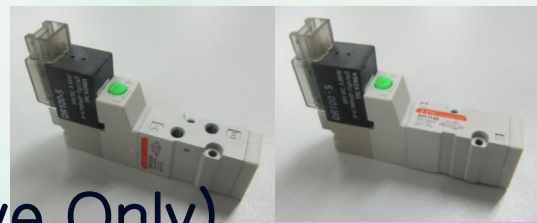
4-2. Dimensions (Body Ported Valve Only)

■ DVC1220(3)/ DOUBLE



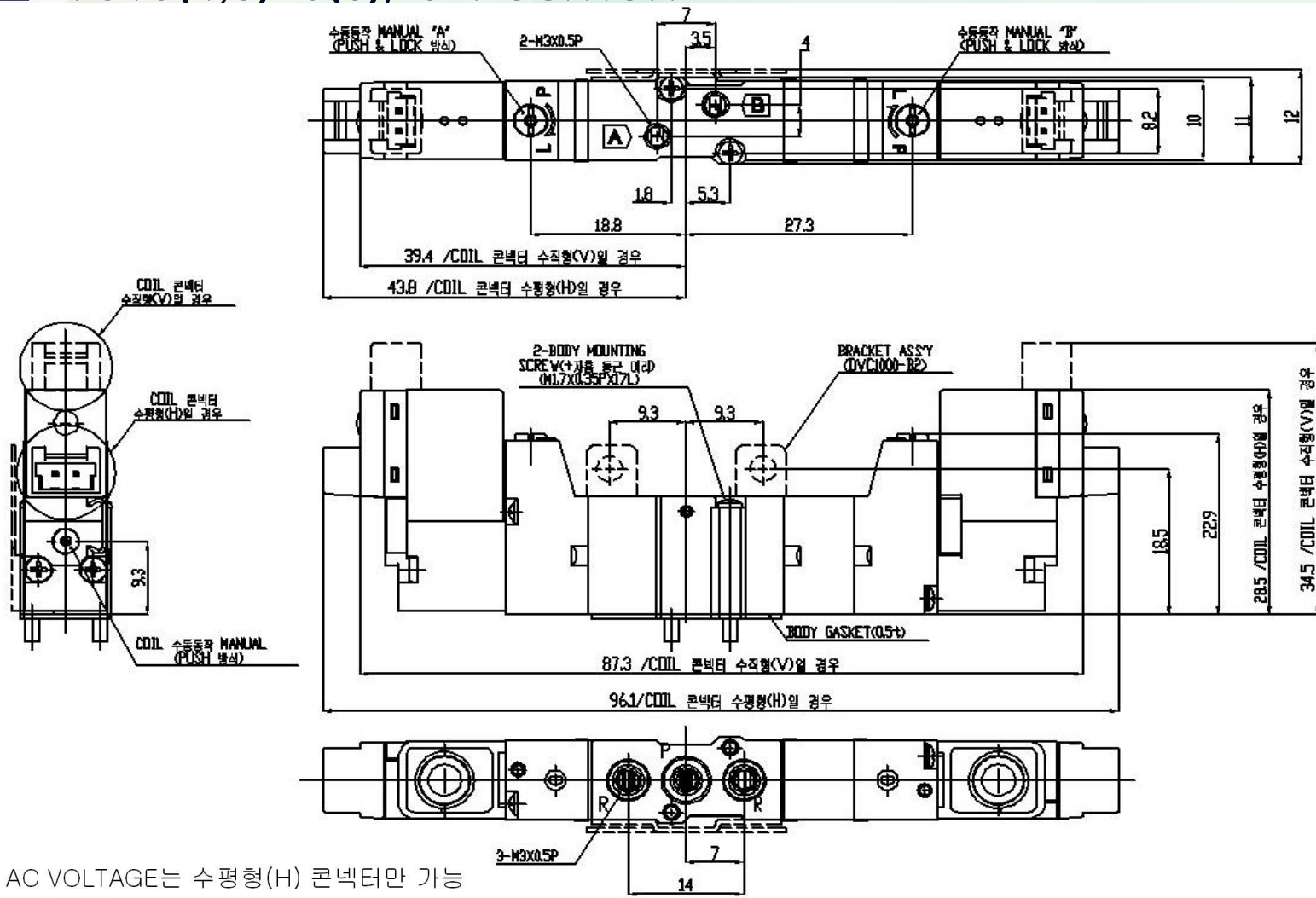
AC VOLTAGE는 수평형(H) 콘넥터만 가능

DV1000 Compact Type Valve



4-2. Dimensions (Body Ported Valve Only)

■ DVC13(4,5)20(3)/ 3-POSITION



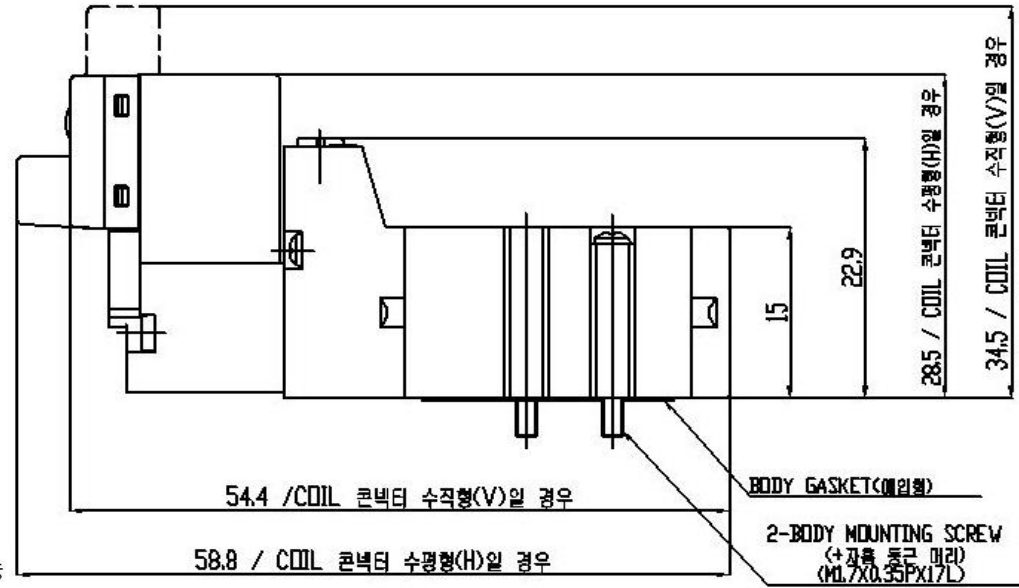
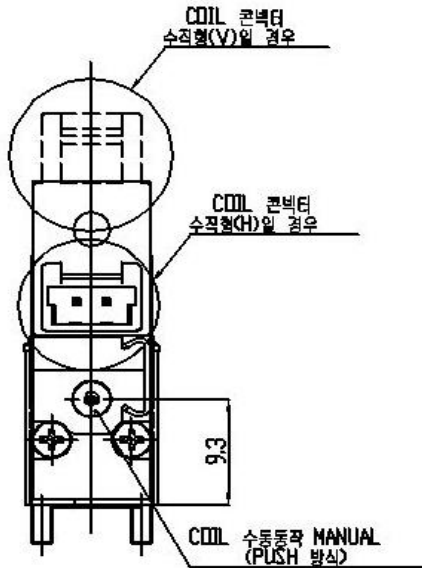
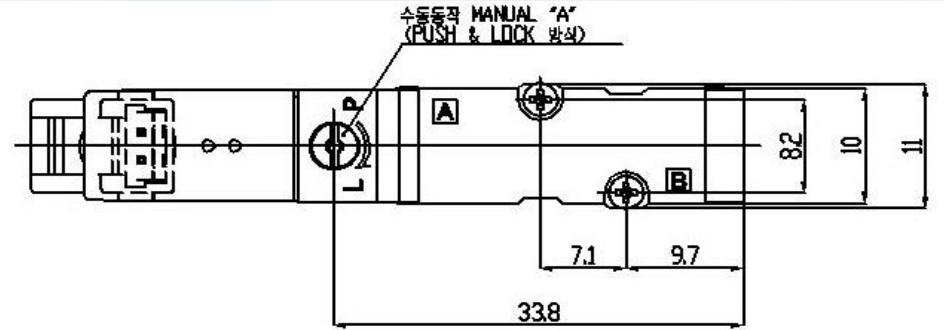
AC VOLTAGE는 수평형(H) 콘넥터만 가능

DV1000 Compact Type Valve



4-3. Dimensions (BASE Mounted Valve Only)

■ DVC1140(3)/ SINGLE



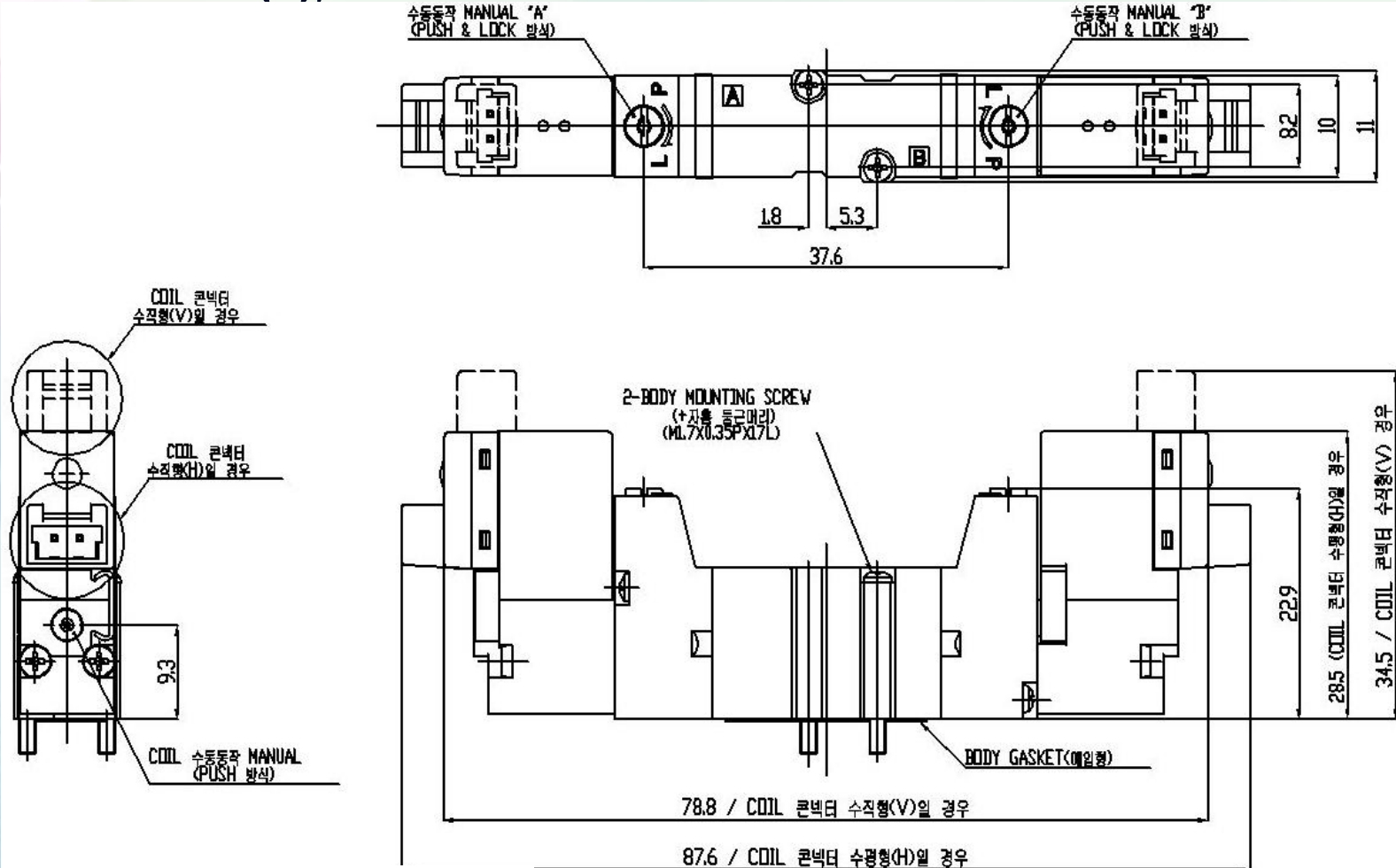
AC VOLTAGE는 수평형(H) 콘넥터만 가능

DV1000 Compact Type Valve



4-3. Dimensions (BASE Mounted Valve Only)

■ DVC1240(3)/ DOUBLE



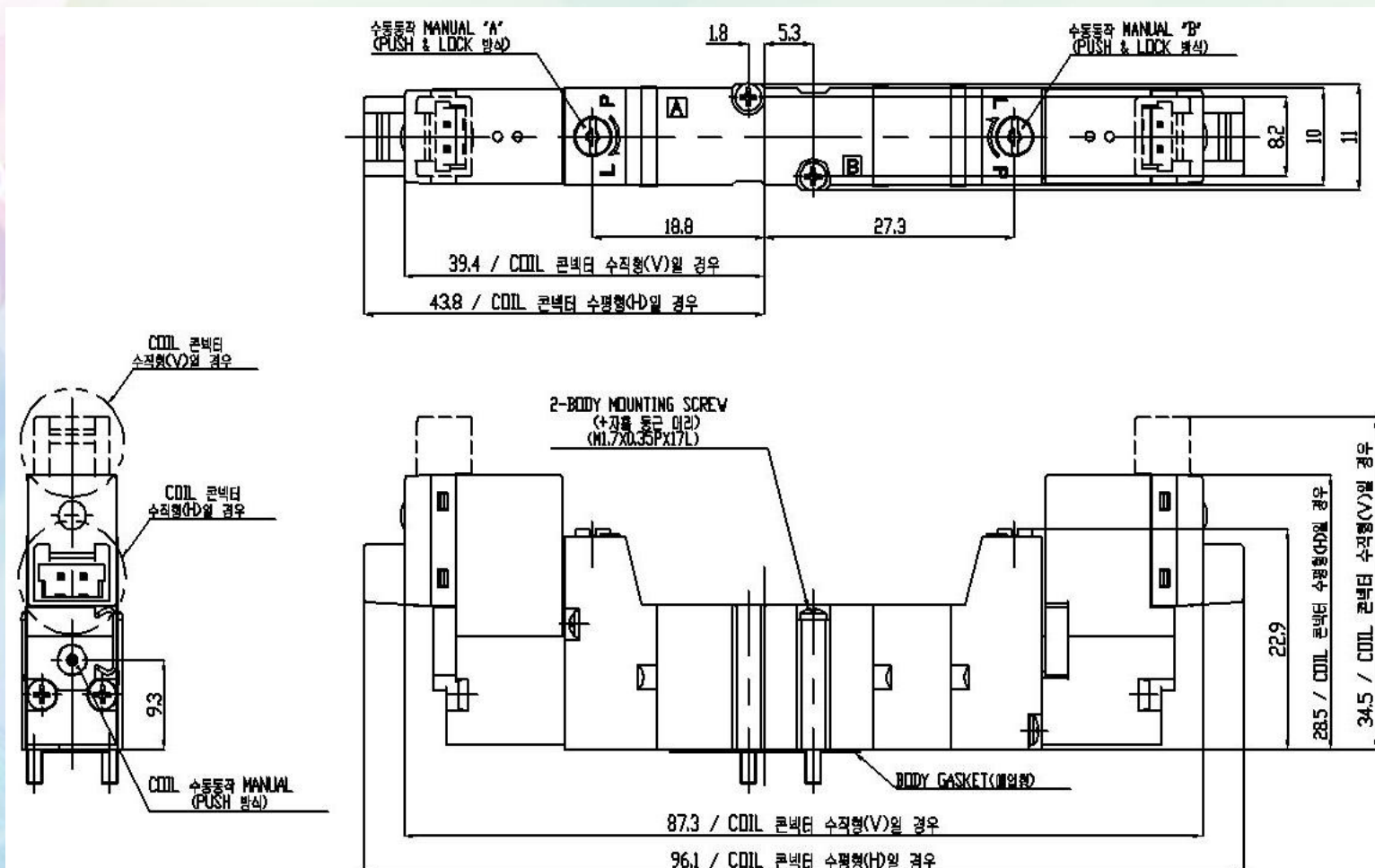
AC VOLTAGE는 수평형(H) 콘넥터만 가능

DV1000 Compact Type Valve



4-3. Dimensions (BASE Mounted Valve Only)

■ DVC13(4,5)40(3)/ 3-POSITION



AC VOLTAGE는 수평형(H) 콘넥터만 가능