

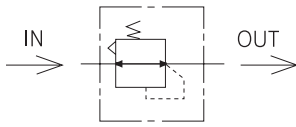
Miniature Regulator

ø4, ø6 built-in fitting

Series PRU



- Compact design and maximum 10 block stations available
- Copper-free : standard



* Backflow function is equipped as standard, so flow can be reversed when inlet pressure goes lower.

Specifications

Fluid	Air	
Max. operating pressure	1.0 MPa	
Proof pressure	1.5 MPa	
Set pressure range	0.05 ~ 0.7 MPa	
Flow capacity	ø 04	200 ℓ /min
	ø 06	350 ℓ /min
Relief mechanism	Relieving type	
Backflow function	Built-in (unbalanced type)	
Gauge port size	M5	
Weight	68g	

- 1) 0.1MPa or higher set pressure is required when it's used in the reverse flow.
- 2) Pressure gauge is not available with copper-free application.

How to Order

PRU — 44 — G — M2

Series

PRU	Miniature regulator
-----	---------------------

In-Out port size

Symbol	Port size (Tube size)
44	IN: ø4 mm / OUT : ø4 mm
66	IN: ø6 mm / OUT : ø6 mm

* Only straight type of fitting is available.

Stations

Symbol	Stations
Blank	1 Station
M2	2 Stations
M3	3 Stations
M4	4 Stations
M5	5 Stations
M6	6 Stations
M7	7 Stations
M8	8 Stations
M9	9 Stations
M10	10 Stations

* Only separate exhaust is available with block stations.

Pressure Gauge

Symbol	Specification
Blank	No gauge
G	Gauge with MPa

- PL2
- PP2
- PC3
- PF3
- PR3
- PL3
- PP3
- PC4
- PF4
- PR4
- PL4
- PP4
- PC5
- PF5
- PR5
- PL5
- PP5
- PFH
PFU
- PPH
PPU
- TEC
- Pannel
Gauge
- PLV
PSH
- PCV
- MB
- PA
- SSV
- SMS
- Accessories
- OPTION
- PER 2000
3000
- PRU
- WR1
- TXF
- TAD
- PVR3000
- PNR4000
- EP
- EM
EL
- ES
- VG
- SPSA
- SPSB
- SPS